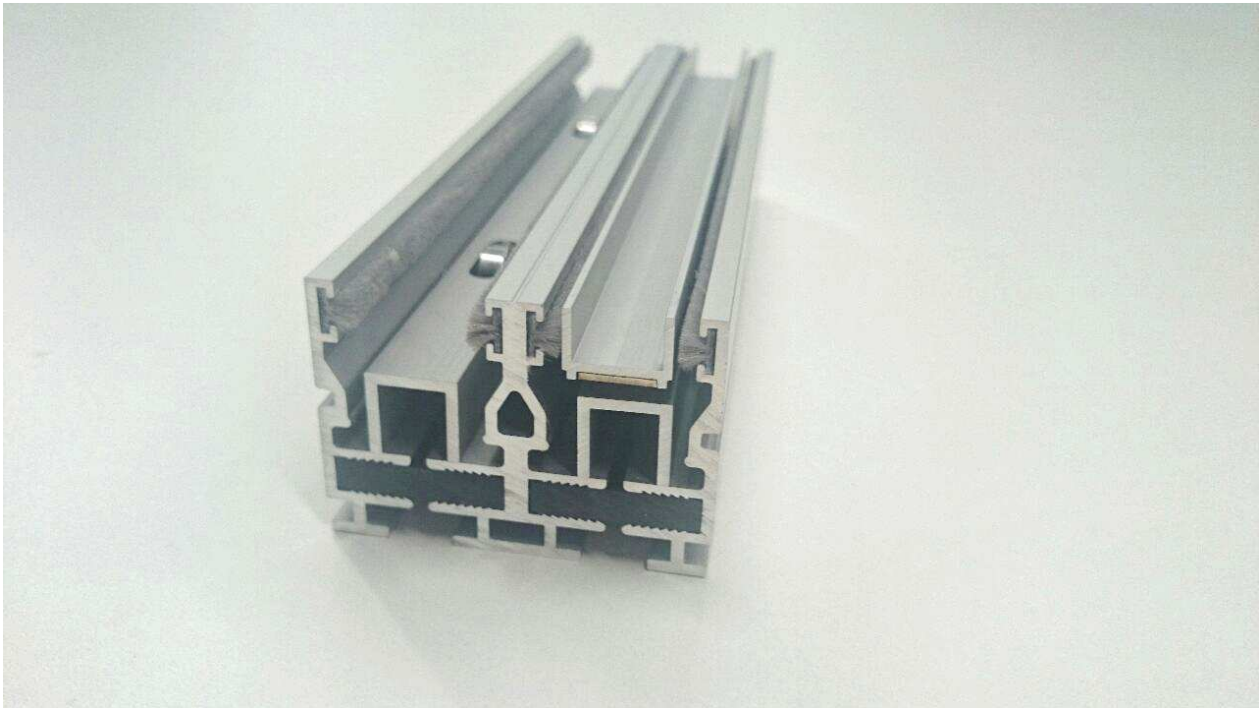


SWIMMS range

Product information

The profile assembly system enables a range of glazing thicknesses to be used (10-12 mm or 16-20 mm). This range has no thermal break, and is ideal for hot countries or internal partitions.



SPECIFICATIONS

Rail + Frames

Embedded and concealed in the floor, wall and ceiling
Frame just 64 mm wide (birails; monorail: 32 mm)
Saline treatment specially adapted for coastal projects

Vertical connection

17.2 mm
Reinforced for very windy locations or installation at high altitudes

Glazing

10 mm to 20 mm (single-glazing)

Closure mechanism

Two-point closure button
Cylinder
Range of options for electric closure
Switch, alarms

Configuration

Standard sliding elements
Opening angle
Pocket

Finishes

Natural or coloured 25-micron anodised aluminium alloy, version with thermal varnish in a very wide range of colours

Drainage chamber

The frames drain vertically, with the rainwater being collected in a stainless steel chamber. This chamber is equipped with drainage foam to protect against the pressure of the wind. It also houses PVC support components which distribute the loads (weight of the glazing) across the concrete structure.

Test type, approx. 2972/2518 mm SWIMMS fixed-sliding	Standards (test and classification)	Classification
Air permeability	EN 1026 (test) EN 12207 (classification)	Class 3
Water permeability	EN 1027 (test) EN 12208 (classification)	Class 7A
Wind resistance	EN 12211 (test) EN 12210 (classification)	Class C3

Main cross sections

